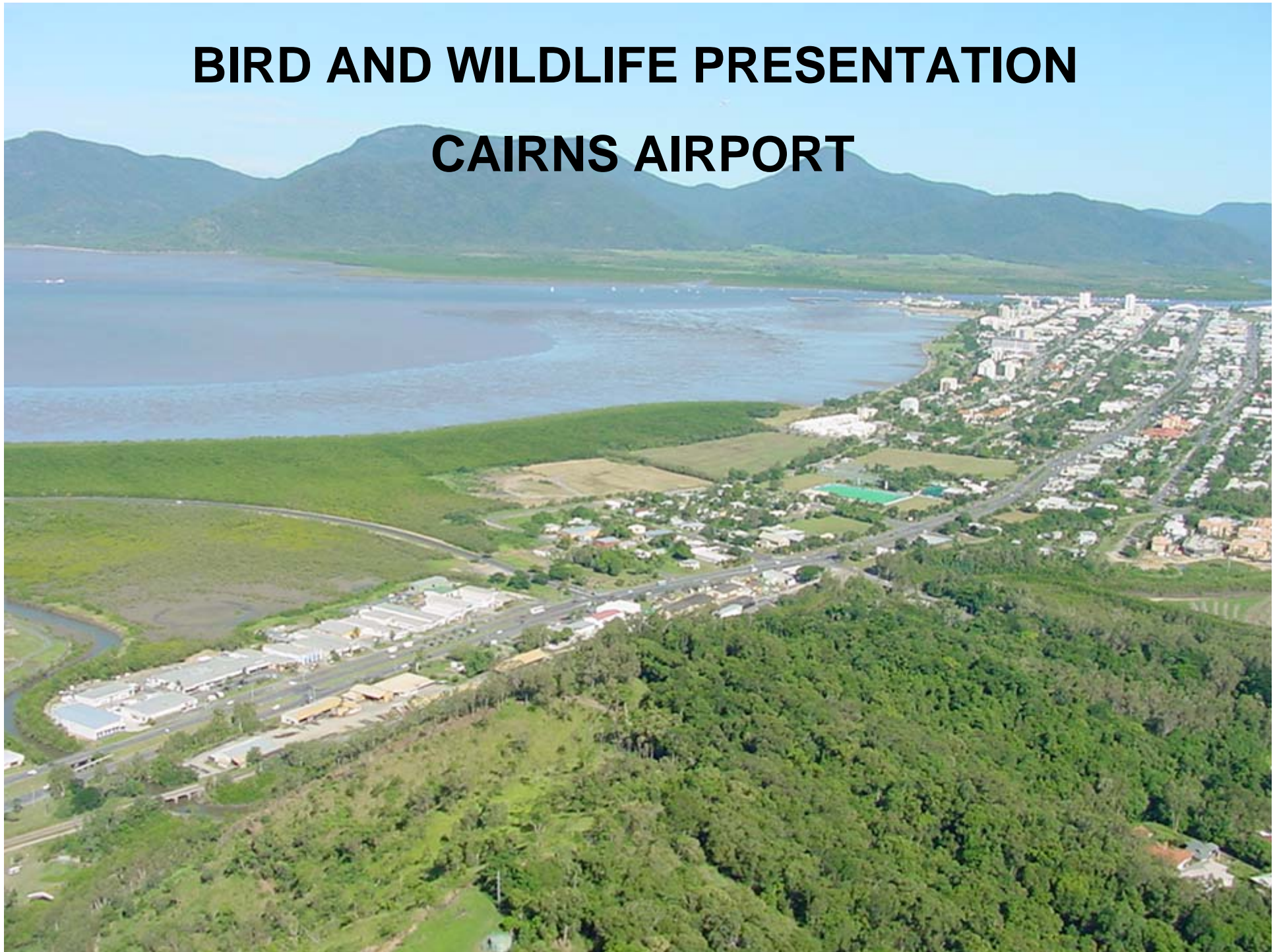


BIRD AND WILDLIFE PRESENTATION

CAIRNS AIRPORT



CURRENT INITIATIVES

DNA

- Driver for DNA Testing
- First Utilised by Cairns Port Authority 9 April 2005
- Australian Museum – Dr Rebecca Johnson
- Airline Assistance Essential
- Used 27 Times since (26 positive Bird ID; Human ID)
- Test Kits and Procedures
- Bird Remains for International Flights – Special Procedures
- Feather ID v's DNA
- Beneficial outcomes – Magpie, Apostle Bird, Rainbow Bee Eater, Button Quail

CPA Tag No. 28
Date: 5/12/05
Airline: QF
Time Since Strik

Cairns International Airport
PO Box 594 Cairns QLD 48

VEGETATION MANAGEMENT

- Vegetation Management Study
- Grass Height Trials
- Habitat Modification – Drainage Improvements,
- Capital Works – 2005/06 \$1.5M
- Night mowing of close in areas to runways – Raptor Issues
- Decoy Areas – Ibis / Egrets
- Rodent Baiting Program



BIRD MONITORING & HARRASSMENT

- Ornithological Surveys – Day and Night
- Dedicated Bird & Wildlife Officer (Safety Officer)
- Decoy Vehicles
- Natural Predators (Nth Qld style)
- Follow-up on Reported Strikes on Departure
- Airman Database System
 - Generation of Bird Strike Forms
 - Reports and Statistics
 - Enables Detailed Analysis of Contributory Factors



BIRD & WILDLIFE ADMINISTRATION

- Bird & Wildlife Strategy – Risk Management Approach
- Wildlife Management Plan
- Strategy Review – KPI's, Audits, Inspections, Surveys
- Bird & Wildlife Management Committee
- Info Sharing with Airlines / AsA
- Joint Airline Wildlife Audits
- Town Planning Issue – State Planning Policy
- Bird & Wildlife Consultants

		Probability of Strike					
		Very Low	Low	Moderate	High	Very High	
Probability of Damage	Very Low	Australasian Grebe Brown Quail Common Sandpiper Common Tern House Sparrow Metallic Starling	Sand Plover Sharp-tailed Sandpiper Singing Bushlark Unidentified Wader White-breasted Woodswallow	Common Myna Fairy Martin Greater Sand Plover Rainbow Lorikeet Richard's Pipit Sandpiper Swallow/Martin	Dotterel Welcome Swallow		
	Low	Little Red Flying-fox			Maggie Lark Microbat Nankeen Kestrel		
	Moderate	Falcon		Bird of Prey	Masked Lapwing	Black Kite	
	High	Little Black Cormorant Duck Osprey		Straw-necked Ibis White-faced Heron		Bush Stone Curlew Flying-fox	
	Very High	White-bellied Sea-eagle			Pacific Black Duck		

Table 3.2 Risk assessment matrix (strike risk) showing combinations of species that require immediate action, review or no action (based on Allan 2003).

Red High risk: Immediate additional action required to reduce the current risk
 Yellow Moderate risk: Review of current management practices and options for additional action required



FUTURE INITIATIVES

- Detailed Investigation of all Significant Strikes – Standard Work Procedures
- Off Airport Hazards – Sewerage Treatment Plant, Cane Fields
- Studies – Flying Fox Study, Vegetation Management Study
- Risk Management Review – EMS Based System
 - Match CPA Risk Management Framework
 - Document Control System via MS Sharepoint Software
 - Facilitated Risk Identification – Stakeholder Workshop

Future Initiatives (cont)

- Capital Works 2006/07 \$0.75M
- Bird Watch Condition Reports
- James Cook University – Research Project
 - correlation of Bird Strikes / Populations to Tides / Weather / Climate / Seasonal Variations
- Bird & Wildlife Training Programs

