



Australia Pacific Airports (Launceston) Pty Ltd



Launceston Airport

and the joy of

Wildlife Management

Andrew Tuma





Australia Pacific Airports (Launceston) Pty Ltd

LAUNGESTON
AIRPORT

Launceston Airport



**So where are we in
Tassie ???**

**Up in the tope right hand
corner near the centre.....**

**And the one airport in Tassie
not plagued by sea birds.**



Launceston Airport

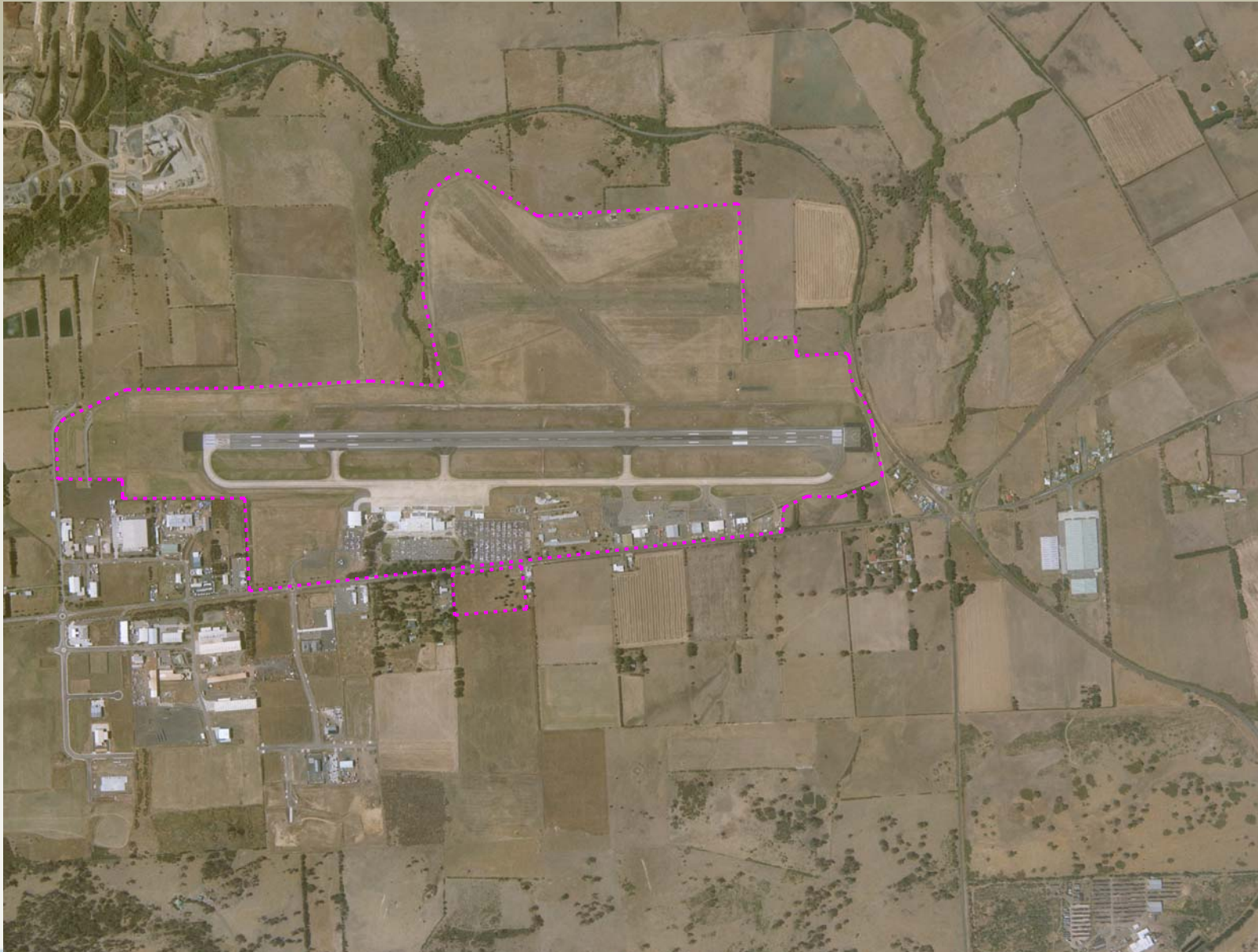
Physical Environment

1. Rural Setting – Mixed farming activity
2. Small villages/towns within 5 Km
3. City of Launceston 16 km
4. Resource extraction activity (3 quarries)
5. Commercial/Industrial activity



Australia Pacific Airports (Launceston) Pty Ltd

LAUNGESTON
AIRPORT





Wildlife Hazards

Birds

Plovers both Banded and Masked species - Constant

Ravens / magpies- Constant

Ducks – Seasonal

Cockatoos - Seasonal

Raptors (Hawks, Eagles, Falcons) – Constant

Small birds – Starlings, sparrows, goldfinch, pitpit, etc - Constant

Mammals

- Wallabies - Constant

- Rabbits/Hare's – Constant

- Wombats - Seasonal



Wildlife Management

Active Harassment and removal program of wildlife in risk areas.

Long grass (300 to 400mm) policy on airside areas

Waste Management with lidded and sealed bins

Limit all standing water – in reality eliminate the issue

Management and removal of food sources



Australia Pacific Airports (Launceston) Pty Ltd

LAUNCESTON
AIRPORT



Wildlife

Management

*Best Laid Plans
sometimes don't
help.....*

*Raptor – Struck on
approach by B737
2 Km off airport at
500m*



Australia Pacific Airports (Launceston) Pty Ltd

LAUNCESTON
AIRPORT

Wildlife Management

Best Laid Plans....in the past off airport...Wedge Tail Eagle





Australia Pacific Airports (Launceston) Pty Ltd

LAUNGESTON
AIRPORT

Questions

