

Runway Safety



Iain White
Safety Promotions & Communications

- **Australian Runway Safety Program**
- **Local Runway Safety Teams**
- **Wildlife**



Definitions

○ **Runway Incursion:** The incorrect presence of an aircraft, vehicle or person on the protected area of a surface designated for the landing and take off of aircraft.

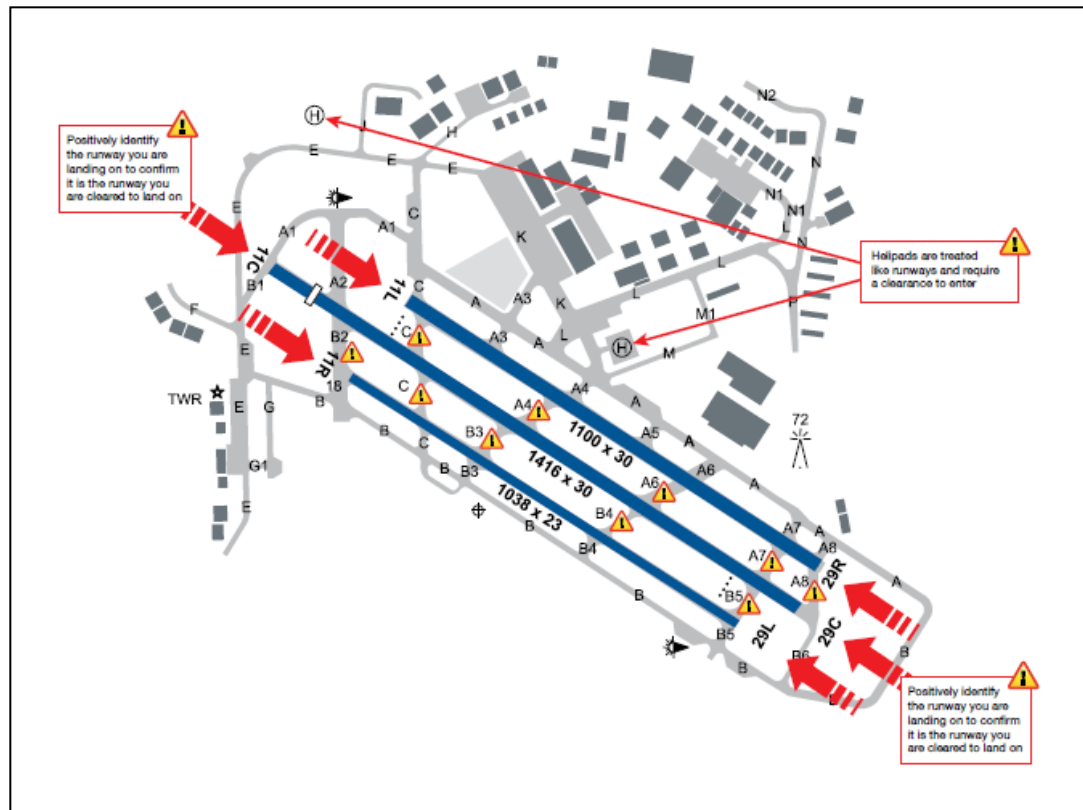
○ **Not wildlife**



Runway Incursion



Q Runway Confusion: The unintentional use of the wrong runway, or a taxiway, for landing or take-off



Definitions

Q **Runway Excursion:** A veer off or overrun off the runway surface

Q Takeoff or landing



QFlight Safety Foundation Report 1995-2008

Q431/1429 Accidents Runway related

Q10 – Incursion

Q4 – Confusion

Q417 – Excursion

QICAO Global Aviation Safety Plan

QRunway Safety

QICAO Assembly Resolution A37-6

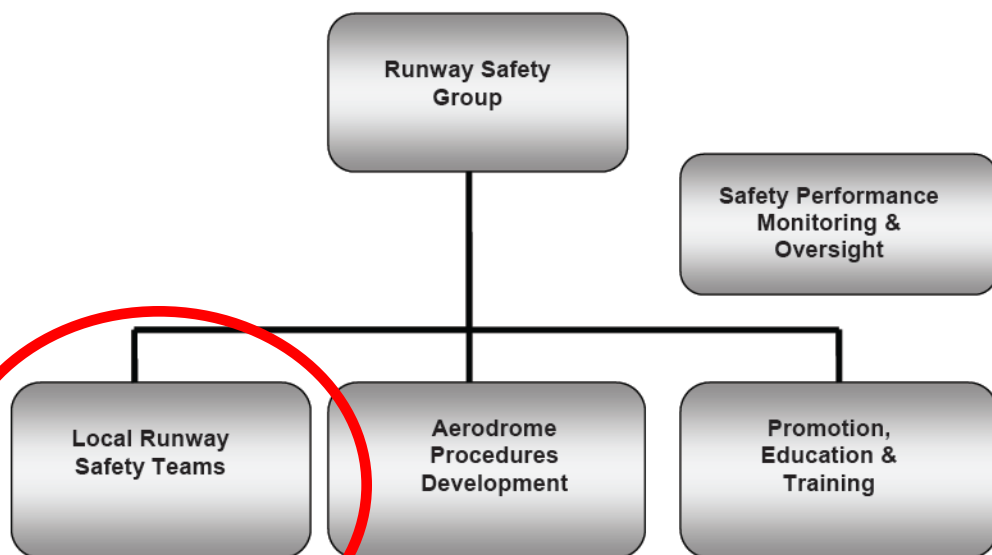
QStates urged to establish multidisciplinary runway safety program

QStates establish Runway Safety Teams comprising all the stakeholders at their airports...

Runway Safety Group

- Current Members

- DIRD
- Airservices
- CASA
- ATSB
- AAA
- AAGSC
- AOPA
- AusALPA
- Defence



25/28 Towered
Aerodromes

Local Runway Safety Teams



What

Q A team of **appropriate local** representatives who **work together** to **improve runway safety** at that particular location

Who

- Aerodrome operator
- Airlines or aircraft operators
- ALR
- CASA
- Pilot associations
- ATC
- ARFF
- Any other group with a direct involvement in runway operations



LRST Meeting Agenda

- **Data and Occurrences**
- **Airport works (Planned/Ongoing)**
- **Visual aids, signage and markings**
- **Low visibility operations**
- **Foreign Object Damage**
- **Wildlife management**
- **Communications – Phraseology, language, equipment**
- **Procedures, publications and practices**
- **Lessons learnt (local and external)**
- **Safety promotional and education programs**
- **Technology, research and development**

LRST tend to focus on Runway Incursion

- Q Approx 20 per month vs 1.5 Runway Excursions
- Q Wildlife not contributory to RI

FSF report

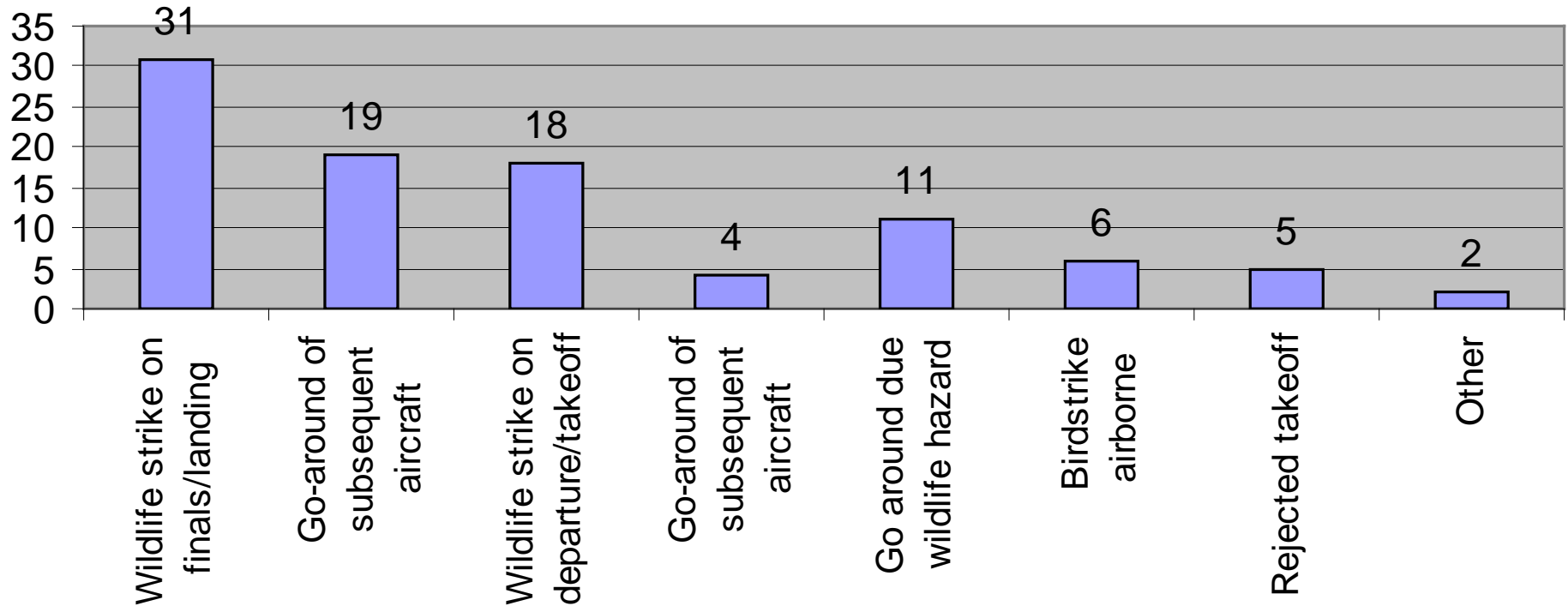
- Q Runway excursions

Major causal factor (RE)

- Q Rejected Takeoff
- Q Failure to go-around
- Q Unstable approach

Wildlife can contribute to Runway Excursions

Wildlife Related Reports (Airservices) Jul 13-Jul 14



LRST Meeting Agenda

- **Data and Occurrences**
- **Airport works (Planned/Ongoing)**
- **Visual aids, signage and markings**
- **Low visibility operations**
- **Foreign Object Damage**
- **Wildlife management**
- **Communications – Phraseology, language, equipment**
- **Procedures, publications and practices**
- **Lessons learnt (local and external)**
- **Safety promotional and education programs**
- **Technology, research and development**

Communications



Questions

iain.white@airservicesaustralia.com

runway.safety@airservicesaustralia.com